

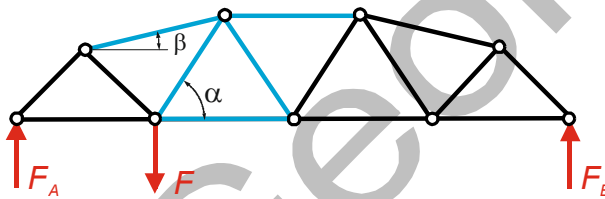
Geg.:  $F$  ( $a$ )

Ges.: Stabkräfte der Stäbe 4, 5, 6, 7, 8

Lagerreaktionen:

$$F_A = \frac{3}{4} F$$

$$F_B = \frac{1}{4} F$$



Geometrie:

$$\sin \alpha = \frac{3}{\sqrt{13}}$$

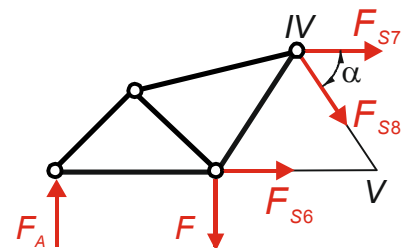
$$\sin \beta = \frac{1}{\sqrt{17}}$$

RITTERscher Schnitt:

$$\curvearrowright IV: -F_A \cdot 3a + F_{S6} \cdot \frac{3}{2}a + F \cdot a = 0$$

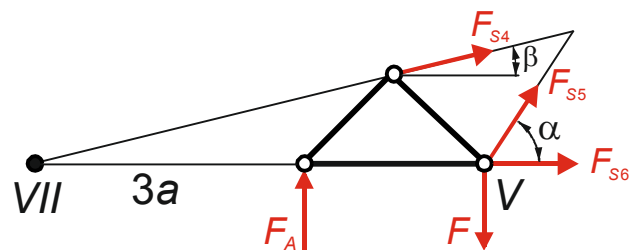
$$\curvearrowright V: -F_A \cdot 4a - F_{S7} \cdot \frac{3}{2}a = 0$$

$$\uparrow: F_A - F_{S8} \sin \alpha - F = 0$$



$$\curvearrowright VII: F_A \cdot 3a + F_{S5} \cdot 5a \sin \alpha - F \cdot 5a = 0$$

$$\uparrow: F_A - F + F_{S5} \sin \alpha + F_{S4} \sin \beta = 0$$



$$F_{S4} = -\frac{3}{10} \sqrt{17} F$$

$$F_{S5} = \frac{11\sqrt{13}}{60} F$$

$$F_{S6} = \frac{5}{6} F$$

$$F_{S7} = -\frac{2}{3} F$$

$$F_{S8} = -\frac{\sqrt{13}}{12} F$$